

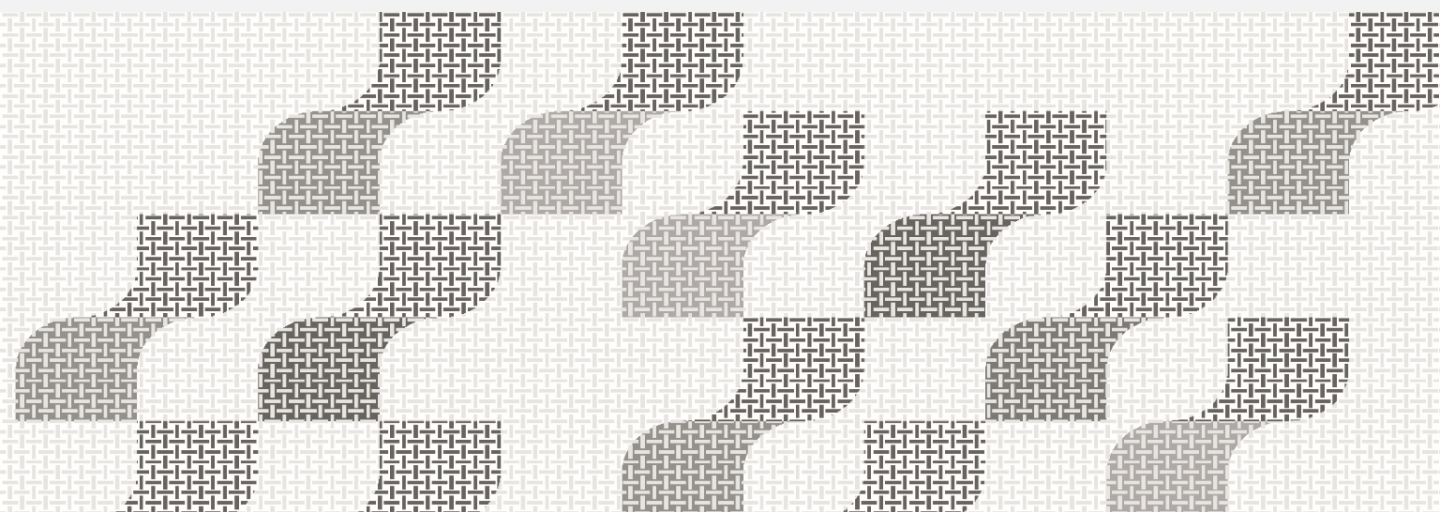
COLLECTION

by **k+r**

RIB
4780

feel good fabric

German Quality . Since 1952





FEATURES

- Self supporting mesh
- Soft fabric touch
- 32 wide colour selection
- Shape stability
- Breathable design
- Quick-ship efficiency
- 3D visual effect
- Achieve German DIN standard
- Efficient and cost saving upholstery



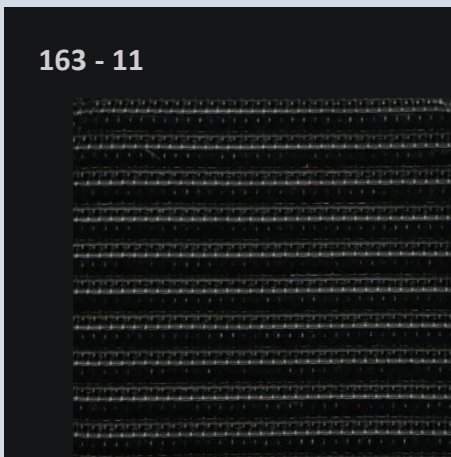
RIB collection , 4780 is designed with 32 colour variations with the latest trend of European Design that provides the possibilities of realizing new design of the chair. The unique combination of polyester and flock yarn material provide an aesthetically 3D visual effect and a soft touch experience to the user.

RIB is part of the k+r Asia quick-ship programme that provide our customers a flexible and quick delivery.

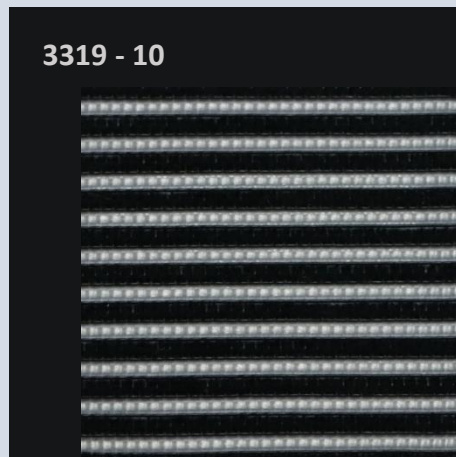
RIB durable material has achieved German testing standard of fastness to light, rubbing, perspiration, dry cleaning and abrasion resistance that ensure a German quality.

BLACK --- LABEL

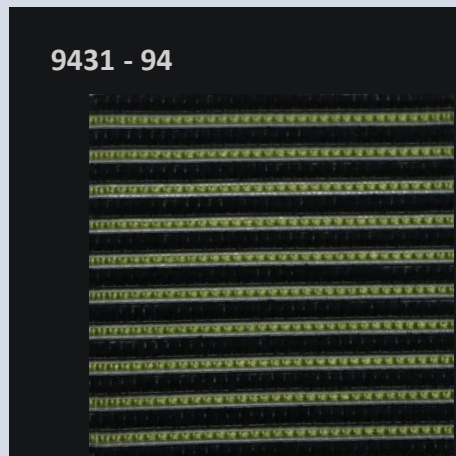
163 - 11



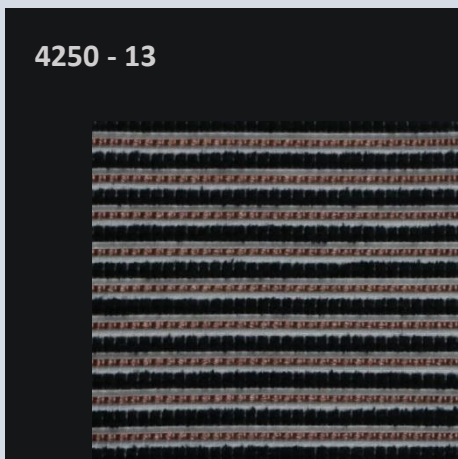
3319 - 10



9431 - 94



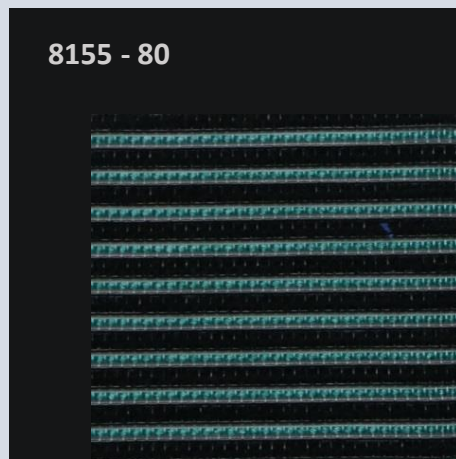
4250 - 13



4250 - 12



8155 - 80



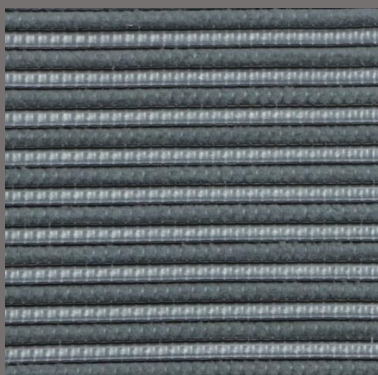
GREY

LABEL

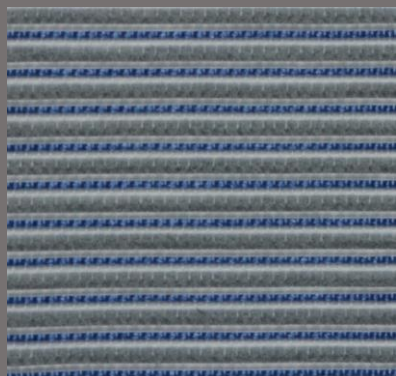
163 - 16



2202 - 15



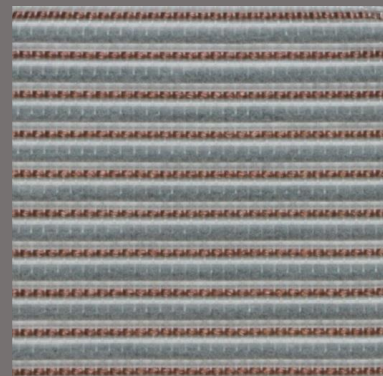
7562 - 18



2202 - 14



4250 - 17



6346 - 19



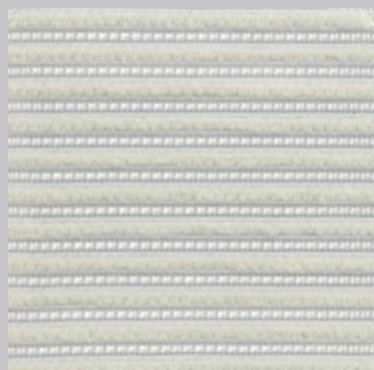
ECRU

LABEL

2202 - 20



3319 - 30



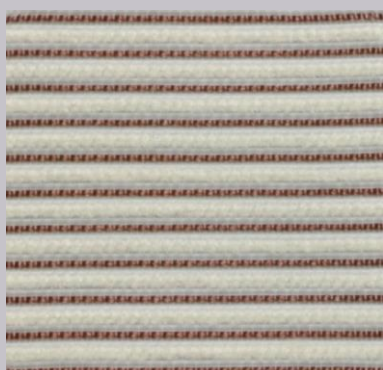
3319 - 21



163 - 31



4250 - 32



6647 - 33



RED

LABEL

2202 - 60



6346 - 61



163 - 63



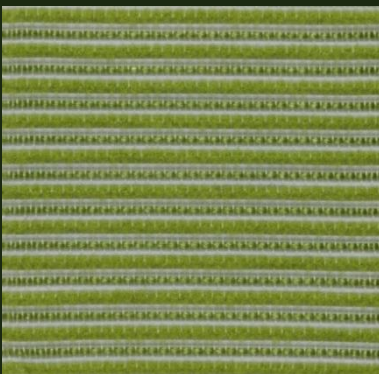
6346 - 62



3319 - 90



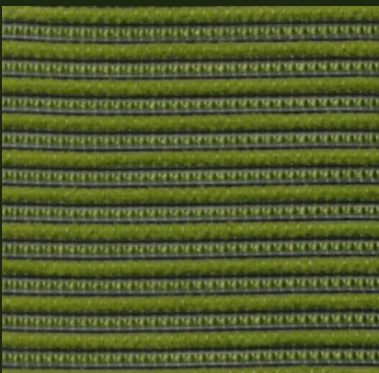
9431 - 92



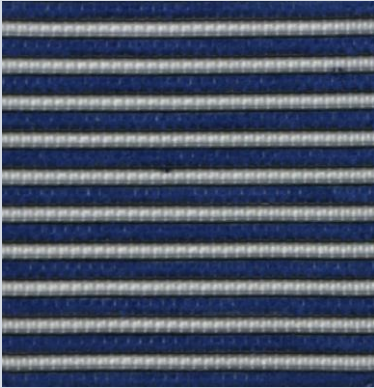
GREEN

LABEL

9431 - 93

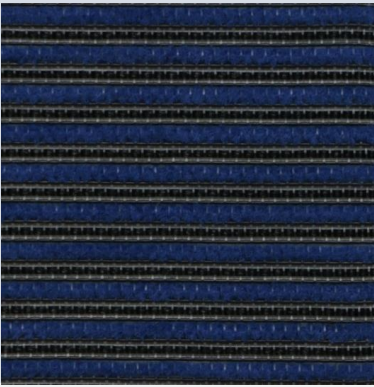


3319 - 70



BLUE --- LABEL

163 - 72



7562 - 71



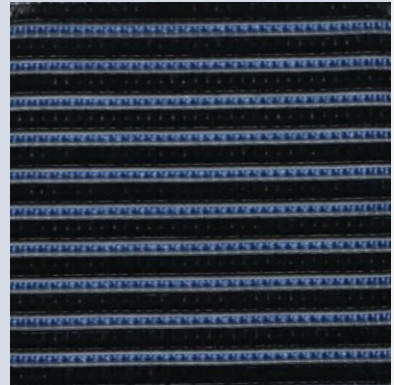
6647 - 73



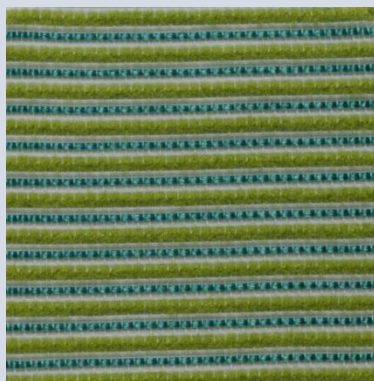
8155 - 74



7562 - 75



8155 - 91





feel good fabric
German Quality . Since 1952

RIB 4780

Composition

34 % Polyester
58 % Polyamid
8 % Polyacryl

Width

160cm

Weight

Approx. 400g/lm

Abrasion Resistance

Martindale (load 12 Kpa)
DIN EN ISO 12947-2 : 2007
150.000 cycles

Flammability

D-DIN EN 1021:2014-01 part 1 (cigarette test)
When tested with non flame retardant foam B3 density
22kg/m³ minimum
Ignitability classification of the upholstery composite
according to DIN 66084 P-c

Fastness to light

DIN EN ISO 105-B02: 2014
5-6

Fastness to rubbing

DIN EN ISO 105-X12:2002
4-5 dry and wet

Fastness to perspiration

DIN EN ISO 105-E04: 2013
4-5 acid and alkaline

Fastness to dry cleaning

DIN EN ISO 105-D01: 2010
4-5

Cleaning

Fixed covers: vacuum cleaning, cleaning with dry foam

k & r Textile Asia Pte Ltd

4, Changi South Lane #05-04
Nan Wah Building Singapore 486127
T: +65 6787 8727
info.asia@kr-textil.com
www.kr-textil.de